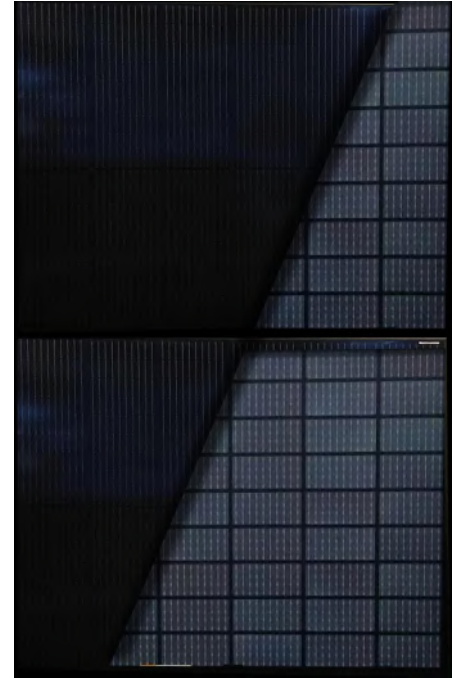




DH-N154T 415-435W

Bi-Plus

N-type Bifacial Half-Cut TOPCon Module
Transparent Backsheet with Black Mesh



Advanced processing techniques realize great module efficiency to a maximum of 22.6%, steady power output guaranteed



0~+5W Positive tolerance delivers higher output reliability



Excellent performance even under low-light settings, such as dawn, dusk and cloudy day

PID

Advanced cell technology and qualified materials lead to high resistance to PID

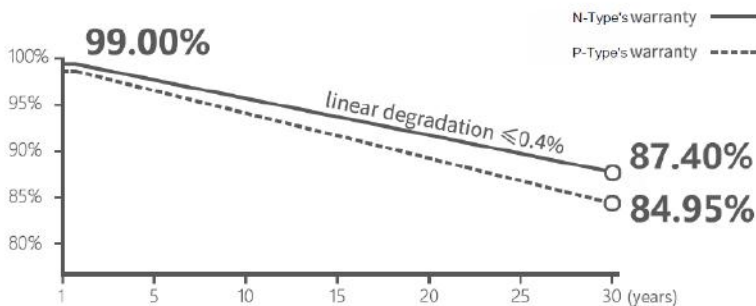


Excellent mechanical load resistance: wind loads (2400Pa) & snow loads (5400Pa)



Reliable quality leads to a better sustainability even in harsh environment like desert, farm and coastline

LINEAR PERFORMANCE WARRANTY



Product Material & Workmanship
12 YEAR WARRANTY

Linear Performance
30 YEAR WARRANTY



DH-N154T 415-435W

Bifacial Half-cut TOPCon Module

ELECTRICAL PROPERTIES STC*	DH-N154T 415W	DH-N154T 420W	DH-N154T 425W	DH-N154T 430W	DH-N154T 435W
Peak Power (Pmax W)	415	420	425	430	435
MPP Voltage (Vmp V)	31.32	31.51	31.70	31.89	32.08
MPP Current (Imp A)	13.26	13.34	13.42	13.49	13.57
Open Circuit Voltage (Voc V)	37.92	38.15	38.38	38.61	38.84
Short Circuit Current (Isc A)	13.99	14.07	14.16	14.23	14.31
Module Efficiency (%)	21.58	21.84	22.10	22.35	22.61
Power Tolerance	0~+5W				
Operating Temperature	-40°C ~ 85°C				
Maximum System Voltage	DC 1500V				
Maximum Series Fuse Rating	30A				

*STC (Standard Test Condition): Irradiance 1000W/m², Cell Temperature 25°C, AM 1.5

ELECTRICAL PROPERTIES NOCT*	DH-N154T 415W	DH-N154T 420W	DH-N154T 425W	DH-N154T 430W	DH-N154T 435W
Peak Power (Pmax W)	312.08	315.84	319.60	323.36	327.12
MPP Voltage (Vmp V)	29.17	29.33	29.51	29.69	29.87
MPP Current (Imp A)	10.70	10.77	10.83	10.89	10.95
Open Circuit Voltage (Voc V)	35.00	35.22	35.45	35.67	35.90
Short Circuit Current (Isc A)	11.29	11.36	11.43	11.49	11.55

*NOCT (Nominal Operating Cell Temperature): Irradiance 800W/m², Ambient Temperature 20°C, AM 1.5, Wind Speed 1m/s

BIFACIAL OUTPUT-REAR SIDE POWER GAIN 420W	DH-N154T 415W	DH-N154T 420W	DH-N154T 425W	DH-N154T 430W	DH-N154T 435W
Backside Power Gain	5%	10%	15%	20%	25%
Rated Power Pmpp (Wp)	441	462	483	504	525
Rated Voltage Vmpp (V)	31.51	31.51	31.51	31.52	31.52
Rated Current Imp (A)	14.00	14.66	15.33	15.99	16.66
Open Circuit Voltage (Voc V)	38.15	38.15	38.15	38.16	38.16
Short Circuit Current (Isc A)	14.77	15.48	16.18	16.88	17.59

Data may vary according to different environment

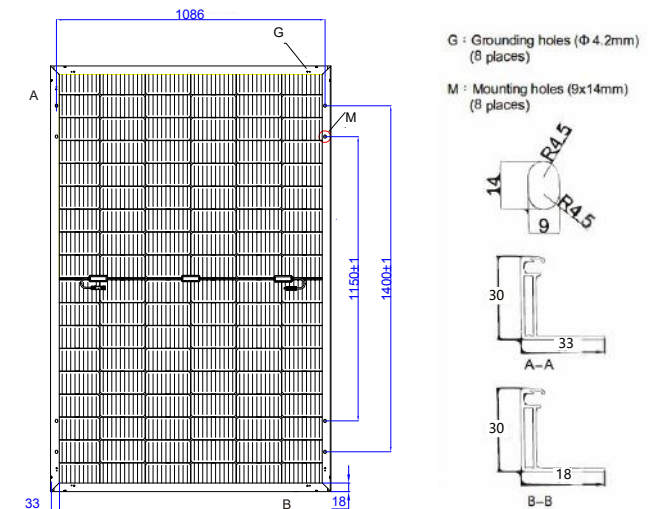
MECHANICAL PROPERTIES	
Cell Type	Mono cell(182x91mm)
Number of Cells	108(54*2)
Dimension	1722*1134*30mm
Weight	21.5kg
Front Glass	3.2mm
Frame	Anodized aluminum alloy frame
Junction Box	IP68, 3 Diodes
Cable Type	4.0 mm ²
UL Fire Type	UL Type 1/ IEC Class C
Length of Cable	1200mm, length can be customized

TEMPERATURE COEFFICIENT	
Temp. Coeff. Of Pmax (TK Pmax)	-0.25%/°C
Temp. Coeff. Of Voc (TK Voc)	-0.30%/°C
Temp. Coeff. Of Isc (TK Isc)	0.045%/°C

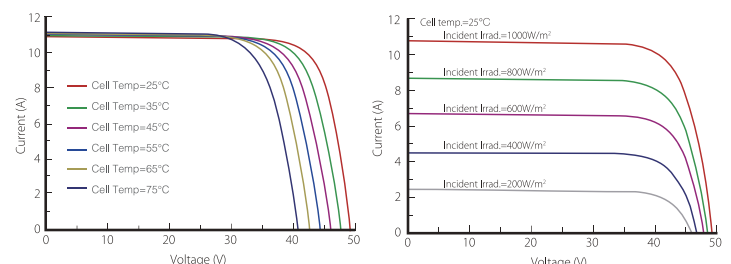
PACKAGING	
Pallet	36 pcs
40'HC	828 pcs

The specifications and key features contained in this datasheet maybe changed, modified or updated at any time under sole discretion of Dehui, without further notice to the user, due to the on-going research and development efforts and continuous product improvement processes employed at the factory. Therefore, Dehui reserves the right to make any adjustment to the information contained herein. It is the responsibility of the user of datasheet to obtain the latest, current revision - matching to the correct Dehui product - that the user has purchased or intends to purchase.

ENGINEERING DRAWING (unit: mm)



I-V CURVES



Email: sales@dehui-technology.com
Website: www.dehui-technology.com

U.S.A Office: 14820 Central Avenue, Chino, CA 91710
China Office: Floor 28, Hang Lung Plaza, Wuxi, China
Germany Office: Sebastian-Kneipp-Str.41 60439 Frankfurt, Germany
Factory Add: Lot H2-1-5 & Lot H2-1-6 Dai Dong-Hoan Son Industrial Park, Bac Ninh Province, Vietnam

